

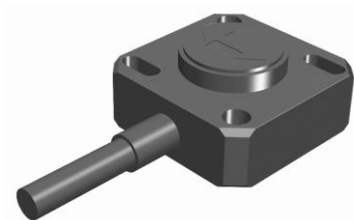
FACTSHEETS 2022

Portfolio USP's Roadmap

MARIUS VAN ANDEL



FACTsheet QG30 (E-series) '22



USP's

- Low cost
- Small dimensions
- Vcc 5V dc
- OEM options

Yes

- Inclination
- 1-axis
- Hori/verti mounting
- Analog output
- Cable
- Range 10°, 30°, 90°
- Vcc 10-30V or 5V dc
- OEM: filtering, range, cable/connector, various outputs

No

- MCU
- Acceleration/tilt switch
- 2 axis
- Centering
- M12
- CANopen
- UL
- Automotive EMC
- Calibration
- Configuration
- Functional Safety

Roadmap

- new generation 2023?
- Centering
- Configuration?
- M8?

Scissor lift



Active sway control



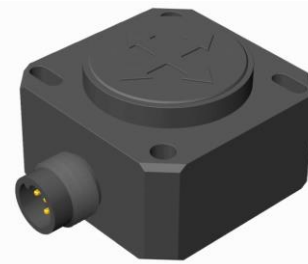
Tail lift



Truck lift



FACTsheet QG40 (E-series) '22



USP's

- Low cost
- Small dimensions
- Vcc 5V dc
- UL
- IP69K
- OEM options

Yes

- Inclination, **acceleration**
- 1-axis, **2-axis**
- Horizontal mounting
- Analog output
- **M12 5-pole**
- Range 10°, 30°, 90°
- Vcc 10-30V dc or 5 V dc
- OEM: filtering, range, cable/connector, various outputs

No

- MCU
- Tilt switch
- Centering
- CANopen
- Automotive EMC
- Calibration
- Configuration
- Functional Safety

Roadmap

- Discontinued 2024?
- Successor QG40N available

Scissor lift



Active sway control



Tail lift



Truck lift



FACTsheet QG40N '22



USP's

- Low cost
- Small dimensions
- Redundant
- UL
- IP69K
- Configurator (USB)
- Omnidirectional
- OEM options

Yes

- 1-axis, 2-axis, 3-axis
- Hori/verti mounting
- Analog output
- **Centering**
- M12 5-pole
- Range 10°, 30°, 90°, 360°
- Calibration
- Configuration
- Vcc 6-30 V DC
- MCU – linear output
- OEM: filtering, range, cable/connector, various outputs

No

- 5 V DC
- CANOpen
- Automotive EMC

Roadmap

- 2nd generation 2024
- Acceleration high BW
- 5V DC
- Improved configurator
- M12 5/6/8-pin?

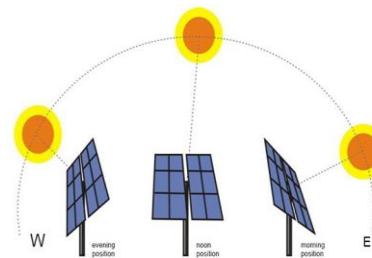
Tilt measurement of platforms



Tilt meas. of baskets



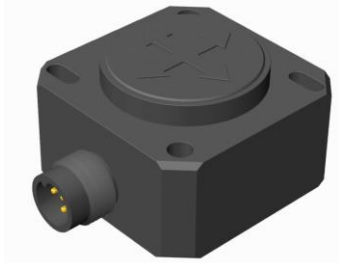
Solar trackers



Max accelerations, Predictive maintenance



FACTsheets QG40N Tilt/accel. switch '22



USP's

- Functional Safety SIL1
- Small dimensions
- UL
- IP69K
- Flexibility
- Configurator (USB)
- Omnidirectional
- RMS/PEAK
- Robust outputs
- OEM options

Yes

- 1-axis, 2-axis, 3-axis
- Std & SIL1/PLC
- Hori/verti mounting
- PNP/NPN outputs
- Centering
- M12 5-pole
- Range 2° - 360°, 0.1-7g
- Calibration
- Configuration
- Vcc 5-30 V DC
- OEM: filtering, ranges, cable/connector

No

- Automotive EMC

Roadmap

- 2nd generation 2024
- Improved configurator
- Combi NPN/PNP?
- 3 outputs?

Speed limit +Up-locking in stackers



Max acceleration shut down switch



Range limit of arms



Warning / protection of vehicle/platform



COMING SOON: FACT sheet QG65N2 analog

USP's

- Static & Dynamic
- Accuracy
- Temperature Coefficient
- USB configurator
- IP69K
- IP68 (QG76)
- Plastic/stainless steel
- UL
- OEM options

Yes

- Inclinations
- 1-axis, 2-axis
- Hori/verti mounting
- Analog output
- Centering
- M12 5-pin
- Range 10°, 30°, 90°, 360°
- Calibration
- Configuration
- OEM: filtering, cable/connector, various outputs

No

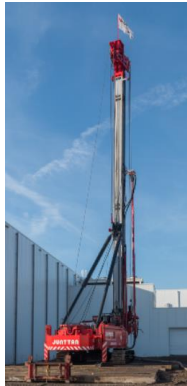
- Tilt switch
- Functional Safety



Roadmap

- Redundant?

Piling



Boom-slope measuring on various cranes



Truck levelling



Spider cranes



FACTsheet QG65 N2/D CAN/J1939 '22



USP's

- Dynamic
- CAN Configurator (USB)
- Portfolio:
 - CANopen / J1939
 - CM / CFM model
 - Dynamic/ Static
 - Standard / High accuracy
- Automotive E4
- IP69K
- IP68 (QG76)
- UL
- Plastic/Stainless steel
- Temperature Coefficient.
- OEM options

Excavator



Yes

- Inclination
- 1, 2-axis
- Hori/verti mounting
- Centering
- M12 5-pin
- Range 30°, 90°, 360°
- Calibration
- Vcc 10-32Vdc
- OEM: filtering, CAN settings cable/connector

Platform lifts



No

- 5V DC
- Tilt switch
- Acceleration
- Omnidirectional
- Functional Safety

Concrete pumps



Spider cranes



Roadmap

- Remote firmware update
- Acceleration
- Redundant

FACTsheet QG65 N CANopen Safety '22



USP's

- Functional Safety SIL2 / PLd
- External certified < June 2026
- CM / CFM model (T-conn)
- UL
- IP69K
- IP68 (QG76)
- Plastic/Stainless steel
- CRC calculator online
- Automotive EMC
- OEM options

Yes

- Inclination, acceleration
- 1-axis, 2-axis
- Hori/verti mounting
- Centering
- M12 5-pin
- Range 10°, 30°, 90°, 360°
- Calibration
- Vcc 8-32Vdc
- OEM: filtering, cable/connector, CAN settings

No

- 5V DC
- Tilt switch
- Omni
- Dynamic
- Configurator

Roadmap

- 2025: Dynamic

Mini-cranes



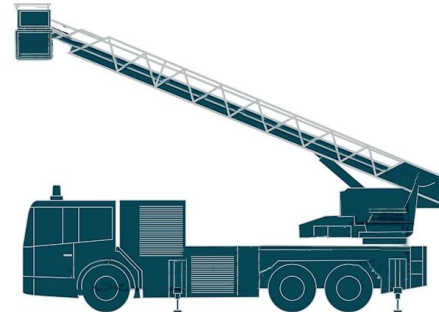
Windmilles



Platform lifts



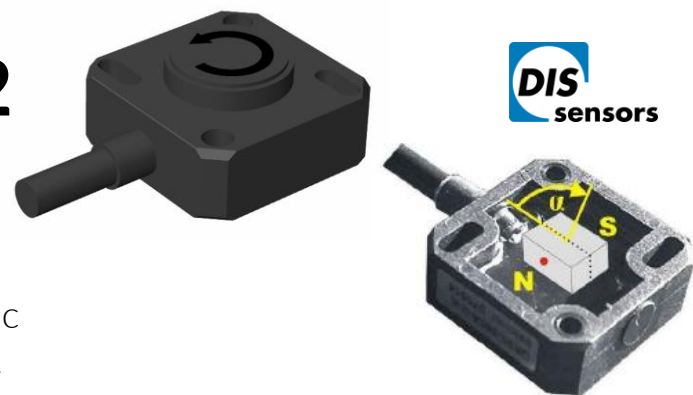
Truck chassis levelling



Boom-control



FACTsheets QR30 incremental '22



USP's

- Low cost
- Small dimensions
- Range 32 ppr to 1024ppr
- Robust push pull outputs
- OEM options

Yes

- Incremental A/B pulse output
- Cable
- Vcc 8-30V DC
- OEM: cable/connector

No

- 5V dc
- M12
- UL
- Configuration
- Functional Safety

Roadmap

- Discontinued 2026
- Successor QR40 EMN

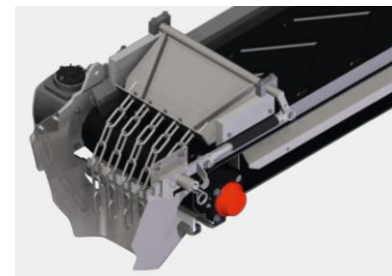
Steering wheel
position feedback



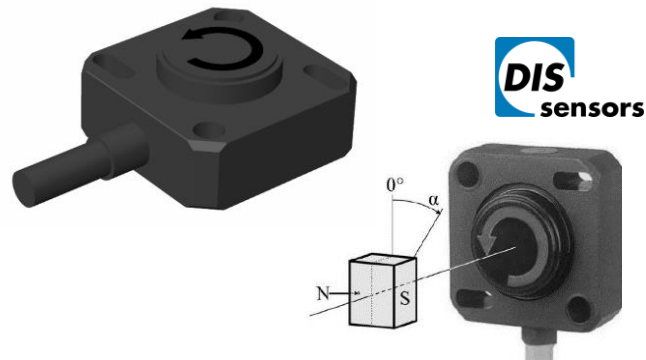
Valve monitoring
garbage truck



Speed control
salt-spreader conveyor



FACTsheet QR30N absolute '22



USP's

- Low cost
- Small dimensions
- Large Magnet distance
- 5V dc
- OEM options

Yes

- Analog outputs
- Cable
- Vcc 10-32V DC
- Ranges 10°-360°
- OEM: ranges, cable/connector

No

- M12
- UL
- Configuration
- Centering
- Functional Safety

Roadmap

- Discontinued 2026
- Successor QR40 EMN

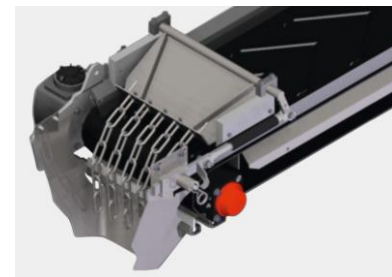
Steering wheel
position feedback



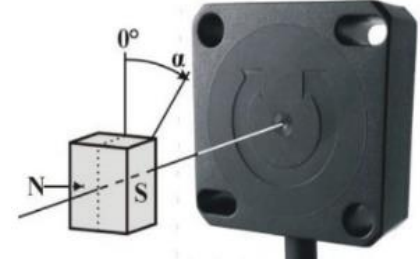
Valve monitoring
garbage truck



Speed control
salt-spreader conveyor



FACTsheet QR40EMN absolute '22



USP's

- Flat dimensions
- Very Large Magnet distance
- Functional Safety: Redundant
- UL
- 5V
- OEM options

Yes

- Analog outputs
- M12 or Cable
- Vcc 10-32 V DC
- Ranges 10°-360°
- OEM: ranges, cable/connector

No

- Configuration
- Centering

Roadmap

- 2nd generation 2025
- Centering
- Configurator
- 14 bit
- CANopen/J1939?

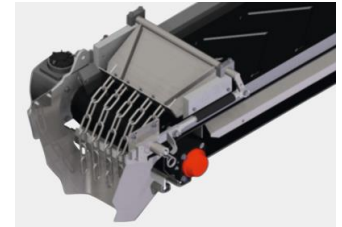
Steering wheel position feedback



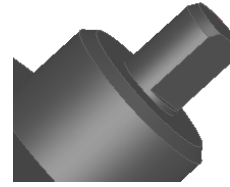
Valve monitoring garbage truck



Speed control salt-spreader conveyor



FACTsheet QR40 absolute '22



USP's

- Shaft
- Internal magnet
- 5V
- OEM options

Yes

- Analog outputs
- D-shaft
- Cable
- Vcc 10-32 V dc or 5 V dc
- Ranges 10°-360°
- OEM: ranges, cable/connector

No

- Configuration
- Centering
- Functional safety
- UL
- M12

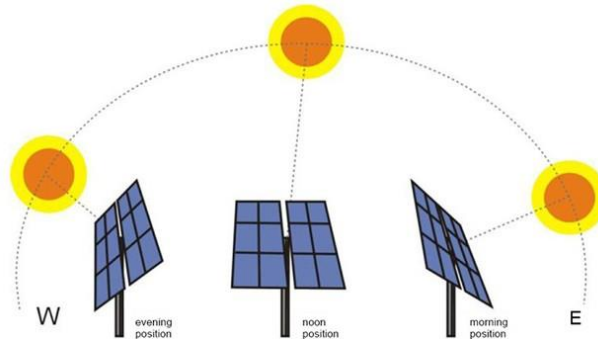
Roadmap

- To be defined

Steering wheel position feedback



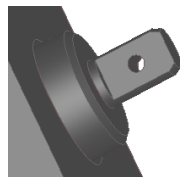
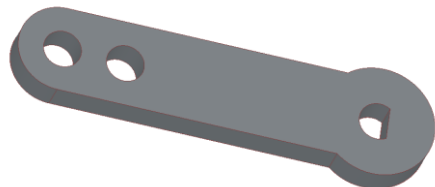
Solar tracker



All kind of rotations



FACTsheet QR46 absolute '22



USP's

- Shaft
- Internal magnet
- Elobau compatible
- Optional lever
- OEM options

Yes

- Analog outputs
- D-shaft
- Cable with M12/Superseal/Deutsch
- Vcc 10-32 V DC
- Ranges 10°-360°
- OEM: ranges, cable/connector

No

- Configuration
- Centering
- Functional safety
- UL
- M12
- 5 V

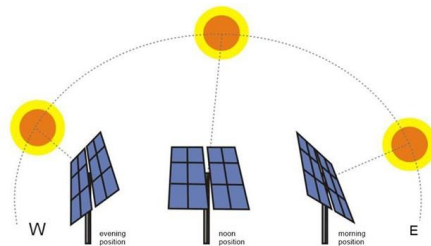
Roadmap

- This is a brand new product

Steering wheel position feedback



Solar tracker



All kind of rotations

